

THE EFFECTS OF 40 COMMON GARDENING CHEMICALS

Studies show that hazardous lawn and landscape chemicals are drifting into our homes where they contaminate indoor air and surfaces, exposing individuals at levels 10x higher than pre-application levels. You can protect yourself and your family, pets, and neighborhood from toxic chemical exposure!

1.



HEALTH EFFECTS

Cancer: **26**
Endocrine (hormonal) Disruption: **24**
Sexual/Reproductive Problems: **29**
Birth defects: **21**
Neurotoxic: **24**
Kidney and/or Liver damage: **32**
Sensitizers and/or irritants: **33**

ENVIRONMENTAL EFFECTS

Detectable in Groundwater: **21**
Ability to Leach into Drinking Water: **24**
Toxic to Fish and/or Aquatic Organisms: **39**
Toxic to Bees: **33**
Toxic to Mammals: **18**
Toxic to Birds: **28**

2.



3.

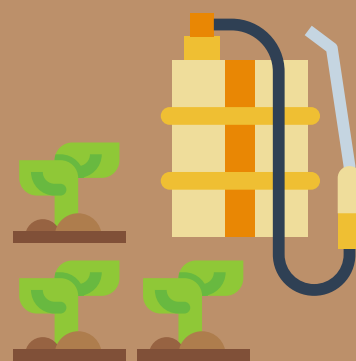
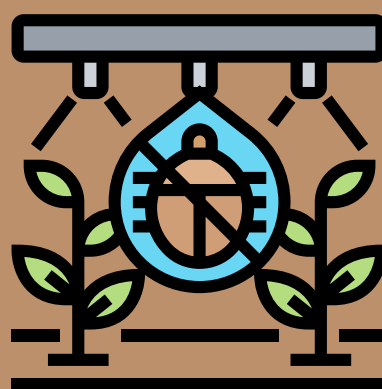
TOP 10 MOST CONCERNING CHEMICALS FOR HUMAN HEALTH



- **2,4-D** (Herbicide)
- **Atrazine** (Herbicide)
- **Carbaryl** (Insecticide)
- **Dicamba** (Herbicide)
- **Glyphosate** (Herbicide)
- **Mecoprop** (Herbicide)
- **Malathion** (Insecticide)
- **Permethrin** (Insecticide)
- **Thiophanate methyl** (Fungicide)
- **Trichlorfon** (Insecticide)

TOP 10 MOST CONCERNING CHEMICALS FOR ECOLOGICAL HEALTH

- **2,4-D** (Herbicide)
- **Carbaryl** (Insecticide)
- **Chlorothalonil** (Fungicide)
- **Dicamba** (Herbicide)
- **Fipronil** (Insecticide)
- **Glyphosate** (Herbicide)
- **Mecoprop** (Herbicide)
- **Malathion** (Insecticide)
- **MCPA** (Herbicide)
- **Imidacloprid** (Insecticide)



4.

See More: beyondpesticides.org/resources/lawns-and-landscapes/overview